

Step Into the Visual Factory



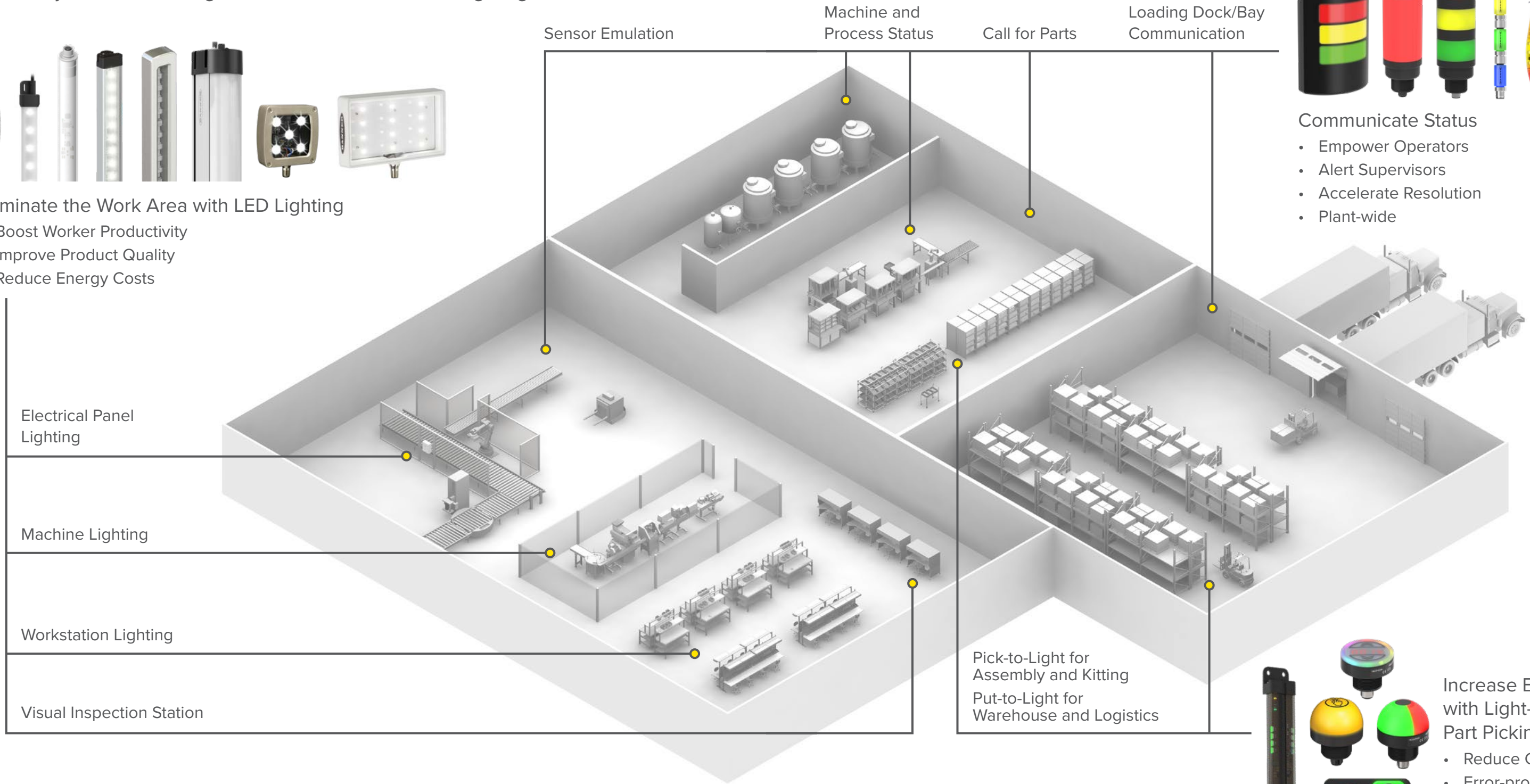
Light Up the Visual Factory

Enhance your Visual Management Efforts with Banner's Lighting and Indicators



Illuminate the Work Area with LED Lighting

- Boost Worker Productivity
- Improve Product Quality
- Reduce Energy Costs



Communicate Status

- Empower Operators
- Alert Supervisors
- Accelerate Resolution
- Plant-wide



Increase Efficiency with Light-Guided Part Picking

- Reduce Cycle Time
- Error-proof Assembly
- Streamline Training

30+
Global Offices

10,000+
Products

5500+
• Employees
• Field representatives
• Application engineers

Leading-edge Production
• Special product variations
• Engineering excellence

Unique Solutions
• To automate production
• To improve efficiency
• To manufacture to the highest quality standard



Assembly Lines, Workstations, and Inspection Lights

Banner Engineering offers a wide variety of lighting solutions for workbenches, manual assembly stations, and visual inspection stations. Our workstation and area lighting devices provide bright LED illumination and feature intensity control options that allow operators to adjust light levels and switch the light off when they are done.

The bright, even light output without hot spots increases worker productivity, improves ergonomics, and provides illumination exactly where needed.



WLB72
inspection



Machine and Equipment Lighting

Well-lit machines and equipment are easier to monitor, troubleshoot, and maintain. Bright, even machine lighting allows operators to monitor processes effectively and have a clear view during troubleshooting, material refill, or when they are completing other manual tasks.

Machine and equipment LED lights from Banner Engineering are built to last in harsh environments and provide years of bright, maintenance-free illumination.



WLS28-2



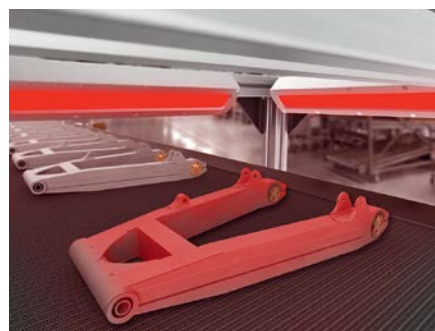
Heavy-duty Lighting

Banner's heavy-duty LED lights offer best-in-class brightness to illuminate applications in harsh environments. Their rugged design enables installation in, or very close to areas that challenge other lighting solutions.

Designed for a variety of environments and applications, including but not limited to machine lighting, automation systems, industrial, wet, and harsh environments, railcars, inspection, dairy/poultry production, agriculture, parking garages, and other indoor and outdoor spaces.



WLS70



Vision Lights

Vision lighting is key to creating all-important contrast between the feature of interest and its background. Choose from a variety of colored lights to make features appear either brighter or darker and facilitate the identification of missing or inaccurate details in your application.



Linear Array
Lights



Tower Lights

Preassembled or configurable multi-segment LED tower light indicators replace conventional stack lights, which often require time-consuming assembly and complex wiring.

Various tower light models result in customized solutions, including a choice of AC or DC power supply, audible output options, standard or high intensity lights and quick-disconnect or pre-wired options.



TL50



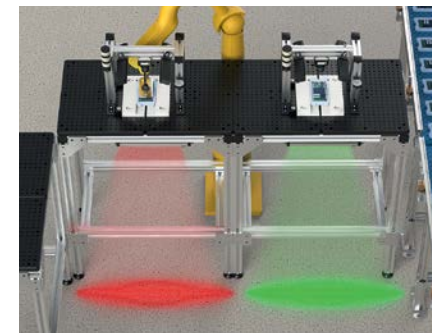
Indicators

Banner Engineering's LED indicators offer a wide variety of bright, highly visible models ranging from daylight visible to multiple colors in one device. They are available starting from 8 mm up to 100 mm.

Indicators have a rugged design for long-term use and require no additional protective box.



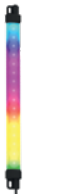
K50



Strip Lights

Configurable multicolor task lights provide illumination during normal operation and offer a large variety of color options and animations for status indication. When an alert occurs, the task light turns to a designated color, flooding the whole workspace with that color.

Colored strip lights are used to provide visual status updates, let a manager know they are needed at a workstation or alert an operator that a machine is jammed, or material needs to be refilled.



WLS15 Pro



In-Line Lighting

In-line miniature devices provide 360-degree illumination and are added easily to existing components.

In-Line sensor status indicators are two-color indicator lights that indicate power and output status. The in-line connection, over-molded design and bright indication create a cost-effective solution that can be applied to most 4- or 5-pin devices with an output. You can even stack them together to create a tower light, each segment controlled by a separate input wire.



S15



Touch Buttons

Banner is the leader in ergonomic, visual, and sealed operator touch buttons for industrial applications. Banner touch buttons can have multiple colors and I/O capabilities, and replace several conventional buttons. This makes them the ideal solution for lean manufacturing environments.



K50 Touch



Non-Contact Pick-to-Light Points and Arrays

Non-contact pick-to-light points and arrays use a photoelectric sensor to automatically verify picks and picking sequences during normal pick motion. Optical touch buttons are zero-force activated and require no physical pressure to operate, resulting in a more ergonomic solution for the operator. Arrays are available in several lengths to accommodate various bin sizes and enable a larger sensing area, with bright and reliable LED lights visible from far distances.



K30 Pro Optical



Pick-to-Light Devices

Pick-to-light devices and systems help industrial automation manufacturers reduce the risk of error in the assembly process, ensuring product quality and reducing cost. These devices are also used in kitting and put-to-light operations to ensure high accuracy in fulfillment operations.



PTL110

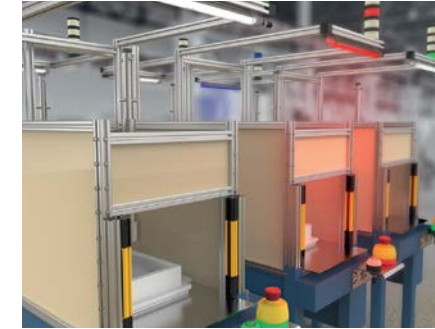


Multicolor Illumination and Indication

Multicolor LED strip lights from Banner Engineering offer high quality lighting and long-lasting low maintenance operation. Our strip lights are designed in robust housings that are built for industrial use. Housings come in a variety of styles to suit any application – from harsh environments to hazardous locations, as well as applications in confined or tight spaces.



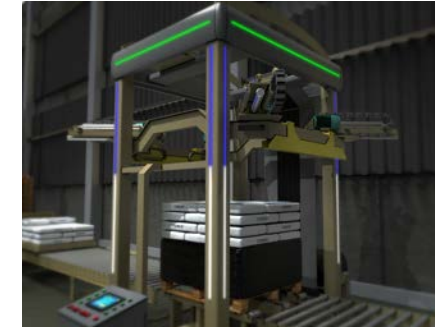
WLS15



EZ-STATUS®

EZ-STATUS solutions from Banner Engineering are bright multicolored lights that indicate, illuminate, and intuitively communicate all in one durable package. EZ-STATUS lights are an ideal indication solution to empower your visual factory.

EZ-STATUS®



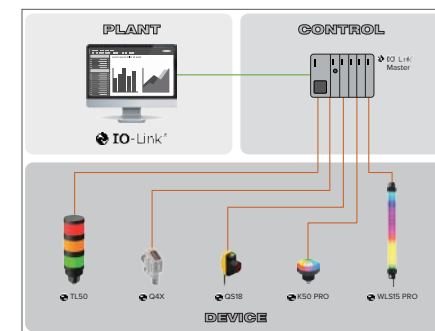
Pro-enabled and Pulse Pro®

Pro series programmable multicolor LED devices from Banner Engineering offer limitless possibilities for advanced indication of dynamic machine states, operator interaction and process statuses. Whether you need illumination, indication or interaction, the family of Pro products from Banner enables advanced capabilities and control throughout your visual environment.



PICK-IQ™

PICK-IQ communication enables greater speed and accuracy in medium and large-scale pick-to-light systems. It adds intelligence to your picking and order fulfillment applications. Pick-to-light devices with PICK-IQ serial (RS-485) communication are easy to use. They are interchangeable and scalable to create flexible pick-to-light systems that set up quickly and adapt to changing needs.



IO-Link®

IO-Link is an open standard serial communication protocol that allows bi-directional exchange of data from IO-Link supported devices that are also connected through a master. The many advantages of using an IO-Link system include standardized wiring, remote configuration, simple device replacement, advanced diagnostics, and increased data availability. Because IO-Link systems are open standard, the devices can be integrated in almost any Fieldbus or automation system.





Agriculture



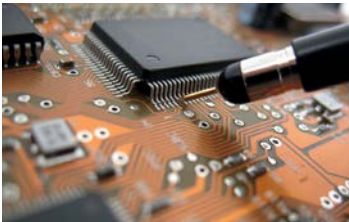
Assembly and Robotics



Automotive



Beverage



Electronics



Food



Material Handling



Mobile Equipment



Oil and Gas



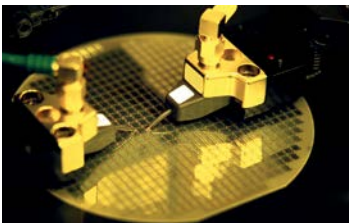
Packaging and
Printing Industry



Pharmaceutical
and Medical



Port Machinery
and Cranes



Semiconductor



Traffic and Parking



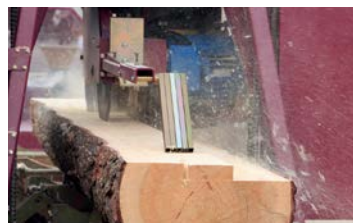
Water Treatment



Electric Vehicles and
Battery Production



E-Mobility



Wood Processing



Gates, Doors
and Loading Docks



Infrastructure



1-888-373-6767 • bannerengineering.com

Talk with an app engineer.
Get product specs.
Order now.

